

The Yorkshire Wolds Way National Trail (May 2019)

Version 1.0



Photo 1: Signpost at Start/Finish point of the Yorkshire Wolds Way (YWW). I arrived at about 10:00am on Saturday May 4th 2019. Located half mile west of Hessle Train Station.



Photo 2: View as I walk towards the Humber Bridge. The bridge, approximately 2miles in length, spans the river between Hessle and Barton-upon-Humber.



Photo: 3: Chair that has been sculptured out of stone to commemorate the YWW. Place names have been carved into the stone.



Photo 4: Underneath the Humber Suspension Bridge. The bridge was built in 1981 and was the longest single span bridge in the world, but has since been superceded by larger bridges.



Photo 5: A windmill Stump: the Hessle Whiting Mill. Was used to crush chalk boulders into powder for use in the cosmetics & paint industry. To harness wind energy, it had an extra sail (5 sails).



Photo 6: View of Humber river looking back towards the Humber Bridge.



Photo 7: View towards river Humber. Taken from near Melton Bottom (chalk) Quarry.

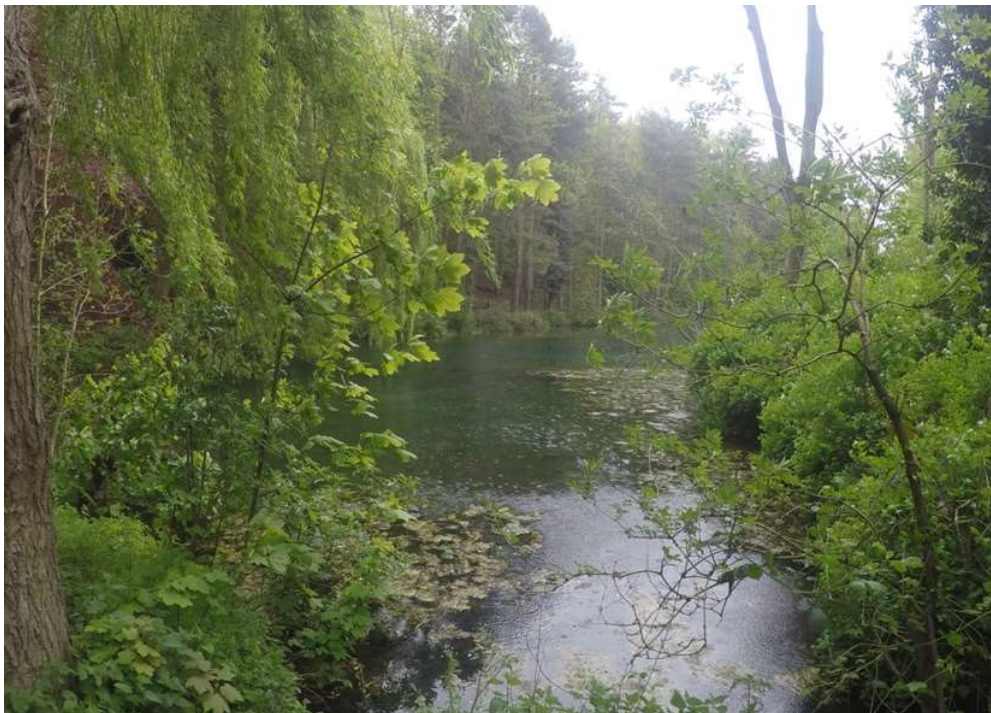


Photo 8: Mill Pond north of the village of Welton.



Photo 9: Heading North and walking along Welton Dale. Part wooded; part grazing pasture.



Photo 10: Photo taken just past 'Wauldby Manor Farm' heading towards near Turtle Hill.



Photo 11: Walked past All Saints Church, which is situated on Dale Road, just outside Brantingham Village.



Photo 12: View, towards South Cave village, from Little Wold Planation.



Photo 13: Following East Dale through 'Low Hunsley Plantation'.



Photo 14: End of day 1, I wild camped in woods just off route. YWW follows Swin Dale to a minor road....



Photo 15: ...that leads to North Newbald. Sign states that I have travelled 5.5miles from turning for South Cave. It is 9:00am on Sunday 5th of May.



Photo 16: Track (Hessleskew lane) on Sober Hill. Sober Hill Windfarm close by.



Photo 17: Had breakfast at the Fiddle Drill Cafe in the village of Goodmanham. Village situated about a mile north-east of the town of Market Weighton.



Photo 18: Swing-gate on route. YWW passes through Londesborough Park, then into the village of Londesborough.



Photo 19: Old Dear Shelters located within Londesborough Park.



Photo 20: Following road through Londesborough village, All Saints Church on the right.



Photo 21: Bluebells + Wild Garlic in Bratt Wood. Just to the south, in the village of Nunburnholme, is St James' Church whose 19th century vicar (Rev James Orpen Morris) was a famous ornithologist. He wrote the book 'History of British Birds'.



Photo 22: 30 miles from Hessle Marker Post. There is a marker post approximately every 5 miles along the YWW.



Photo 23: The Pilgrimage of Grace Heritage Trail which links with the YWW. View looking towards Pocklington.



Photo 24: Leaving road onto track through farmland. As track climbs it passes Warrendale Plantation to right of path.



Photo 25: View looking down into Sylvan Dale.



Photo 26: View from above Millington Dale.



Photo 27: View looking towards Pasture Dale & Pasture Dale Plantation.



Photo 28: Dead Rat on Path.



Photo 29: I Wild Camp in Woods just before turnoff for Huggate Village. Using my canvas sheet & Bivi Bag.



Photo 30: Following road that leads to North Field House/Lodge. Date: Monday 6th May 2019.



Photo 31: View above Horse Dale, taken while sitting on a sculpted 'Poetry Bench' which was created as part of the WANDER art project.



Photo 32: While passing through Fridaythorpe I stopped at the nearby Seaways Café for breakfast then followed the trail past the local duck pond as I headed out of the village. The pond is the half-way point of the YWW.



Photo 33: Dead Baby Duck @ Fridaythorpe duck pond.



Photo 34: Looking down into West Dale & (another) Horse Dale.



Photo 35: 40 miles from Hessle Marker Post @ bottom of Brubber Dale. Trail then rises to Gill's Farm before descending into....



Photo 36: ...Thixen Dale. View taken as I descended into Thixen Dale, located at the bottom was an artwork called *Waves and Time* created by Chris Drury. Part of the WANDER art project.



Photo 37: Following the bottom of Thixen Dale and heading north through the Thixen Dale Wolds to the...



Photo 38: ...village of Thixendale. View looking back towards the Village.



Photo 39: The deserted (Medieval) village of Wharram Percy. Comprises of a disused church, a millpond and outlines (i.e. 'lumps in a field') of a number of ancient dwellings. Most of the remains of village are buried beneath the surface.



Photo 40: Grave stone to a one Joseph 'Crow' in St Martin's church's churchyard. St Martins' is a disused church originally of 10th century Saxon construction.



Photo 41: Trail then passes through the village of Wharram le Street before following track through farm fields. Photo taken looking back towards Wharram le Street.



Photo 42: Road heading past High Bellmanear farm, near Settrington beacon.



Photo 43: Forest track through Beacon Wold & Rowgate plantations.



Photo 44: Looking down from Rowgate Hill towards some disused Quarries & Rowgate Farm.



Photo 45: Wild Camped under trees next to disused Quarry. Photo taken on Morning of Tuesday 7th May 2019.



Photo 46: Some outbuildings in the village of Wintringham.



Photo 47: 55 miles from Hessle marker post. Marker Post located near St Peters' Church Wintringham.



Photo 48: I followed trail through Deep Dale Plantation (above).



Photo 49: Guardian Warriors @ Enclosure Rites artwork (Wander Project). Guardian Warriors are based on artifacts found in ancient burial sites. Trail then follows an ancient earthwork.



Photo 50: View Towards A64 and the Vale of Pickering. My Aunty Elizabeth Austin (R.I.P. Tony Austin who died on 090519 – Both Archaeologists @ York University) lives in the town of Pickering, Yorkshire.



Photo 51: The 60 miles from Hesse Marker Post. View across the Vale of Pickering.



Photo 52: Walking along road past Staxton Wold Farm which is south of the village of Staxton.



Photo 53: Large imposing Antenna @ Staxton Wold RAF military installation. Considered one of the oldest radar stations in the world.



Photo 54: Trail then crosses Flixton Wold. Following hedge surrounded by grazing sheep.
After Flixton wold path follows line of an ancient earthwork.



Photo 55: Passing through the Town of Muston on the last section before Filey. Day: Wednesday 8th May 2019.



Photo 56: View from Filey Seafront towards Filey Brigg.



Photo 57: Stone Sculpture Marking the End of 'Yorkshire Wolds Way' & start of 'Cleveland Way'.



Photo 58: View towards Filey Seafront from near Filey Brigg.



Photo 59: Spent a wind-swept, rain-lashed night @ Filey Brigg Campsite. The following day I commenced walking the Cleveland Way NT.



Photo 60: The gradually eroding Filey Brigg, composed of hard calcareous gritstone bedrock. Half-way along were the remains of a Roman signal station.



Photo 60: Photo of the James Watt Statue spotted in Leeds City Center.

The Yorkshire Wolds Way National Trail is a 79-mile (130km) Trail which starts at Hessle (Near Hull) and finishes in the seaside town of Filey (Yorkshire). It involves walking / hiking across the Yorkshire Wolds, through cultivated fields and passes through many small villages along the way. The Wolds are generally quite & pleasant, if not overly spectacular, with often exposed windswept hills, and occasional woodland. The Yorkshire Wolds represent the Northernmost part of a predominately Chalky Landscape which stretches across most of the south of England between Dorset & Kent.
